

# MAKE IT YOUR OWN

SP-1  
Sublimation  
Printer



# UNLEASH YOUR INNER ARTIST!

## Make it yours

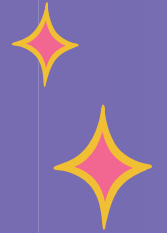
Ideal for artists, creators, designers, crafters and sellers alike. The power of customisation is your hands with Brother's compact, desktop sublimation printer.

## Express yourself

Across a range of gifts, homewares, clothing and more with the Brother Sublimation Printer SP1.

## You're in control

Make ready-made orders at home. No need to send out to expensive, slow, third-party suppliers. Perfect for curious crafters and small business users who are looking to add a new skill, or diversify their offering.



## Connected customisation

Use your favourite design software to print directly from your computer or smart device. Or connect to the Brother Artspira app for creative customisation with no limits.

## Get started straight away

With the included Starter Pack, which contains sublimation paper and a full set of vibrant colour Brother inks.

## Connected craft room

Explore Brother's other app operated and wireless enabled machines and software. Used together there's no limit to what you can create.

## How does sublimation work?

Print onto a sheet of sublimation paper, then use a heat press to transfer the design to your chosen product. T-shirts, totes, mugs, travel cups, sweaters, homewares... What will you customise?



# Digitise, create, sublimate

Artspira

Link to the Brother Artspira\* design app to access an inspiring variety of project designs and patterns. Use the editing tools to easily modify text elements, swap out images and change backgrounds. Design anywhere any time, then transfer wirelessly to your Sublimation Printer and see your designs come alive before your eyes.



Print designs up to 215 x 355mm



Print in high quality, vibrant colours



Compact size, perfect for your desktop



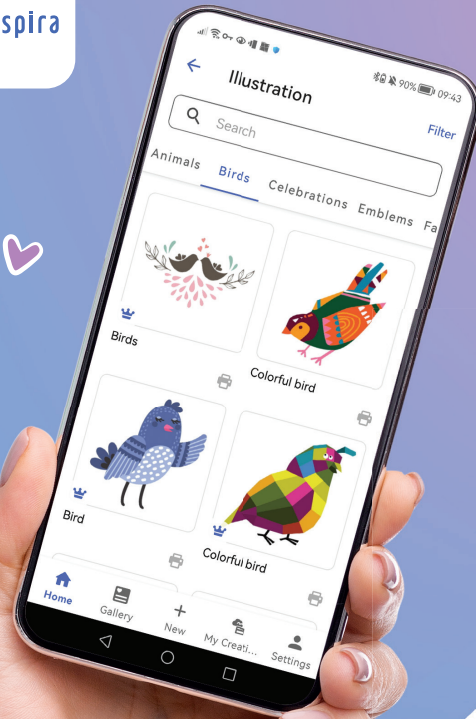
Connects wirelessly



Express yourself further with Artspira!



Print via Artspira app or normal printer driver



Starter kit included: sublimation paper and full set of inks



Find out more about the SP1 here



\*Brother Artspira embroidery, craft printing and cutting design app is free to download and use for all compatible Brother wireless embroidery, craft printer and cutting machine users. However, some features of the app must be purchased via the Artspira+ subscription and may be limited dependent on resident country. See in-app for more details.

For more information contact your dealer or visit [sewingcraft.brother.eu](http://sewingcraft.brother.eu)

Follow @BrotherSewingUK



Follow @BrotherSewingCraft



Contact:



**brother**  
at your side